



LIBRARY DATABASE

AI RESEARCH TOOLS

**Office of Poding Memorial Library and Information Services
Reader Services Section**



OUR RESEARCH TOOLS...

01

**WEB OF SCIENCE™
RESEARCH ASSISTANT**

02

**COMPENDEX ON
ENGINEERING VILLAGE**

03

**PROQUEST
ONE BUSINESS**



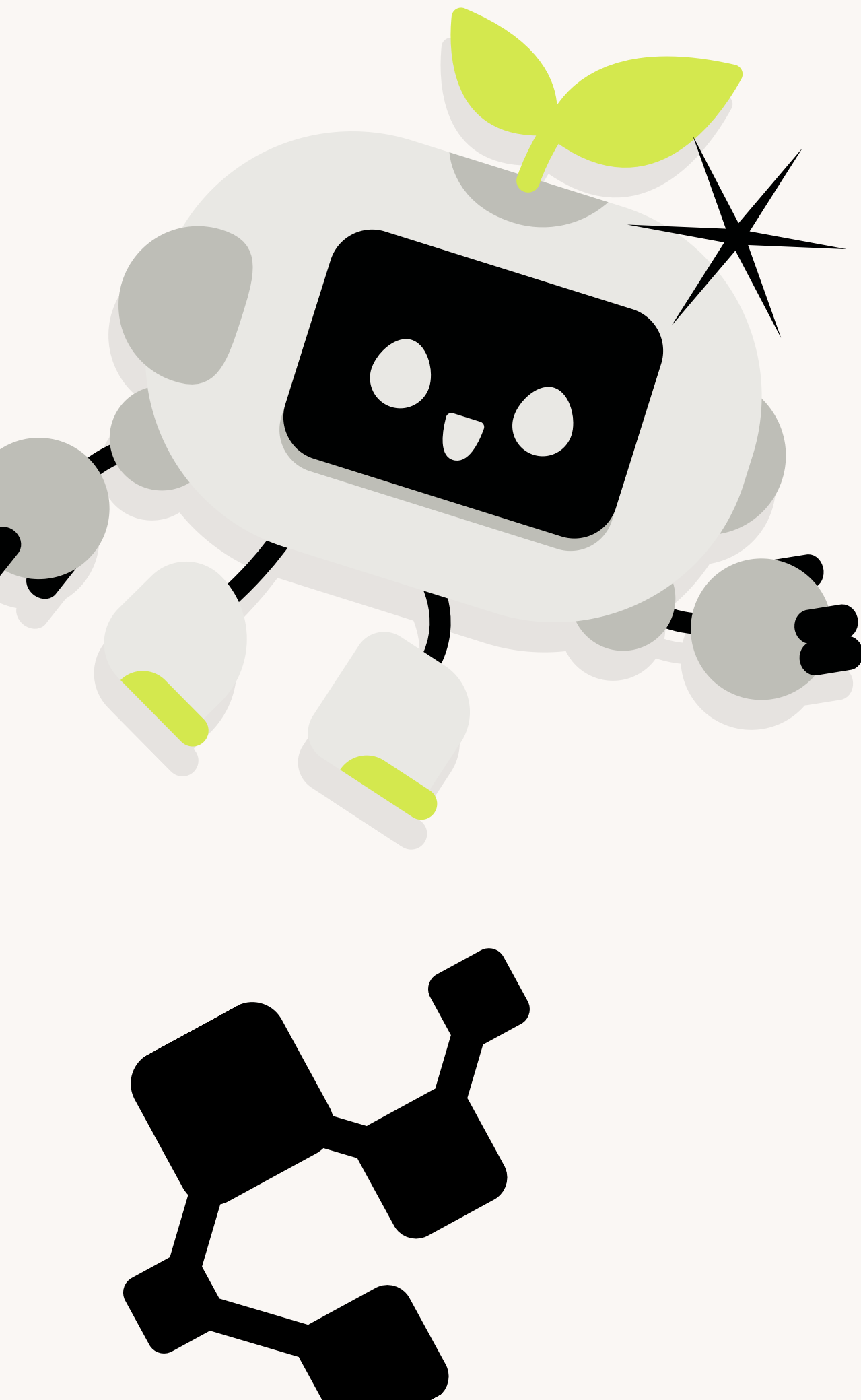
04

WRITEFULL

05

TURNITIN



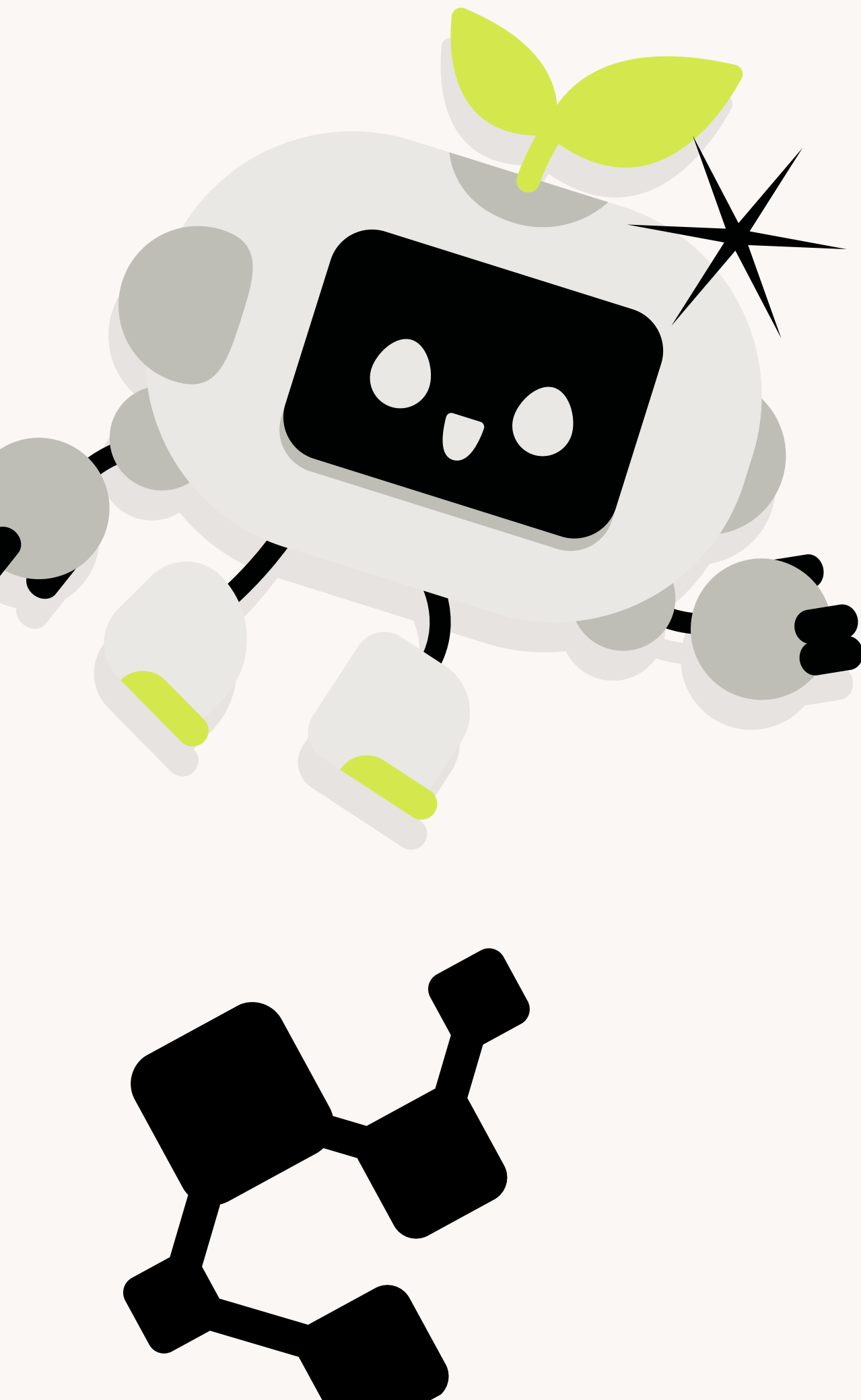


WOS(I) RESEARCH ASSISTANT



WOS RESEARCH ASSISTANT CAN :

- Move quickly and confidently as you explore a topic, conduct literature reviews and identify best-fit journals for your work.
- Conduct natural language searches in several languages and receive concise overviews and commentaries that consider over 120 years of research.

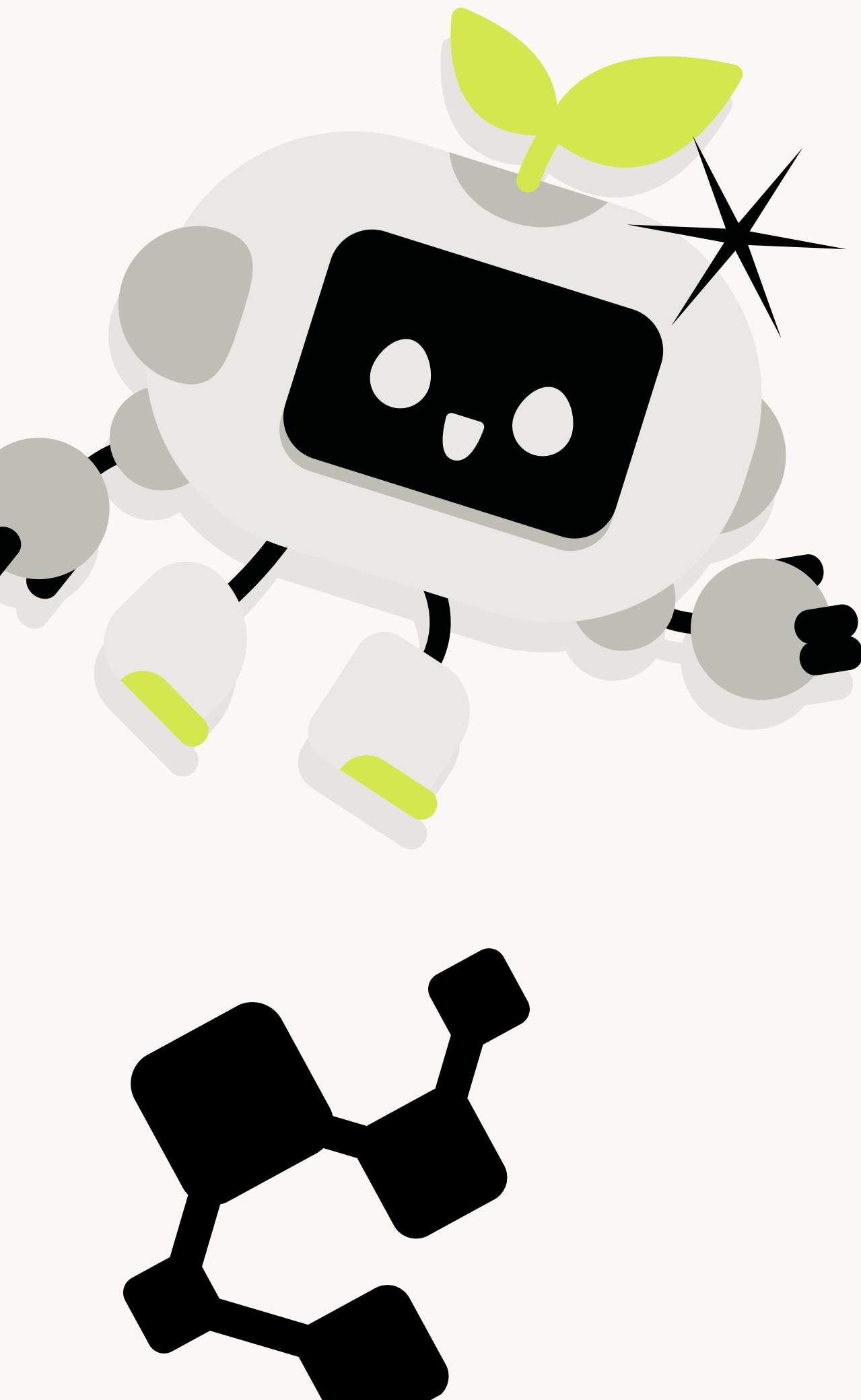


WOS(II) RESEARCH ASSISTANT

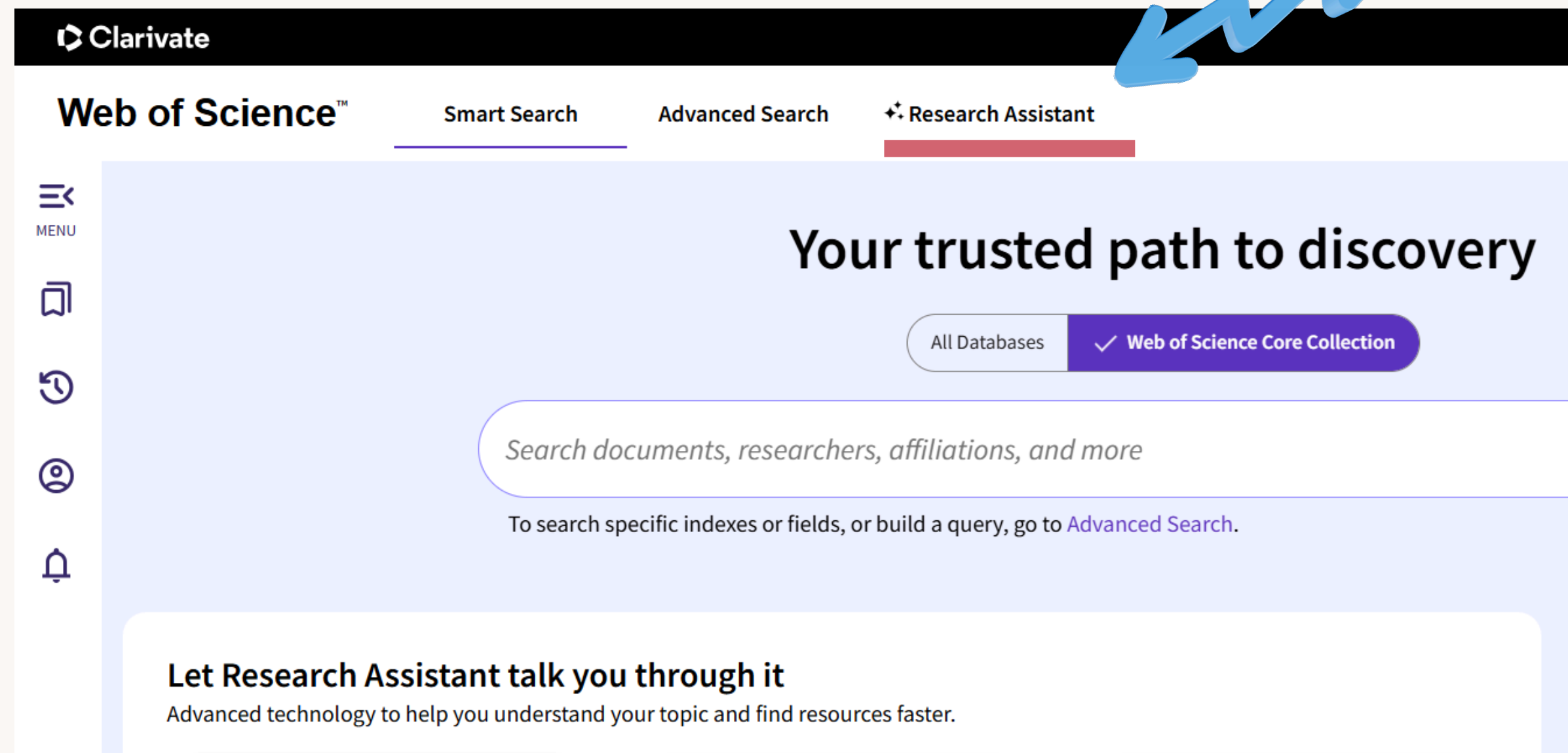


WOS RESEARCH ASSISTANT CAN :

- Navigate research tasks with guided walkthroughs and save time with context-specific prompts delivered as you work. Identify experts to develop your collaboration strategy.
- Explore dynamic visualizations and carry out light analytics quickly with the help of co-citation networks, topic maps, trend graphs and more.



WOS(III) RESEARCH ASSISTANT



Clarivate

Web of Science™

Smart Search Advanced Search **Research Assistant**

MENU

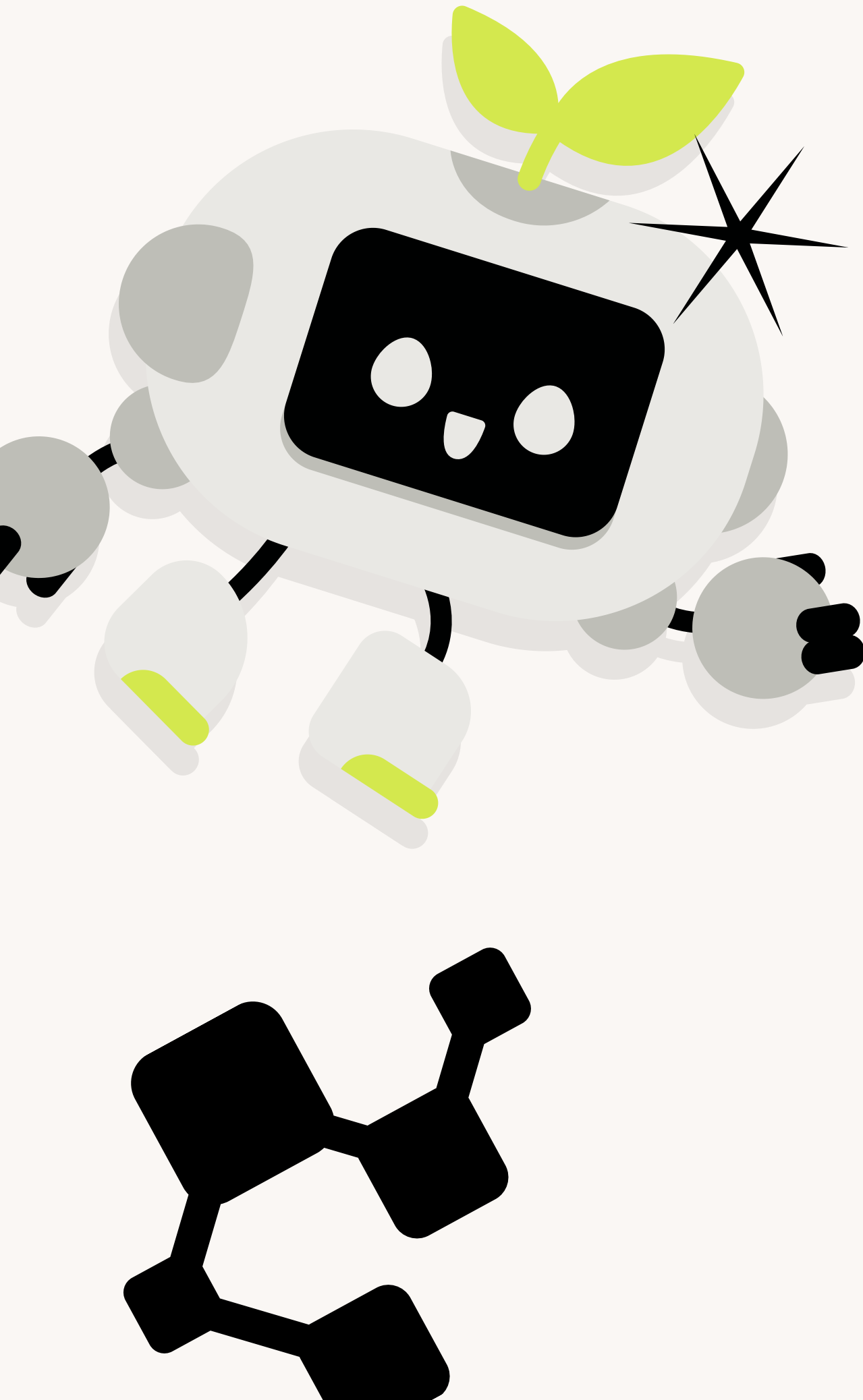
Your trusted path to discovery

All Databases **✓ Web of Science Core Collection**

Search documents, researchers, affiliations, and more

To search specific indexes or fields, or build a query, go to [Advanced Search](#).

Let Research Assistant talk you through it
Advanced technology to help you understand your topic and find resources faster.



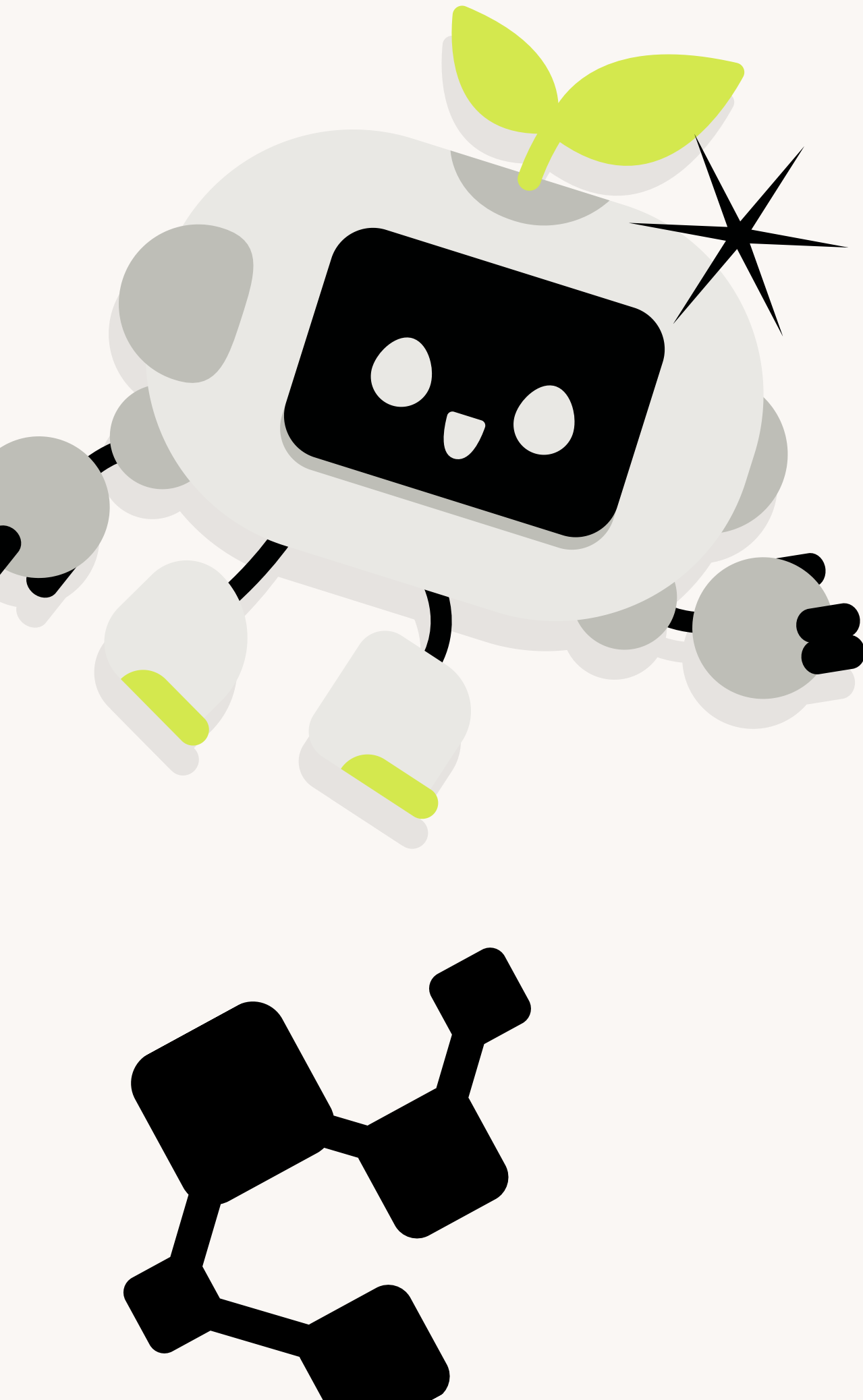
COMPENDEX ON ENGINEERING VILLAGE AI (I)



WHAT IS COMPENDEX ON ENGINEERING VILLAGE ?

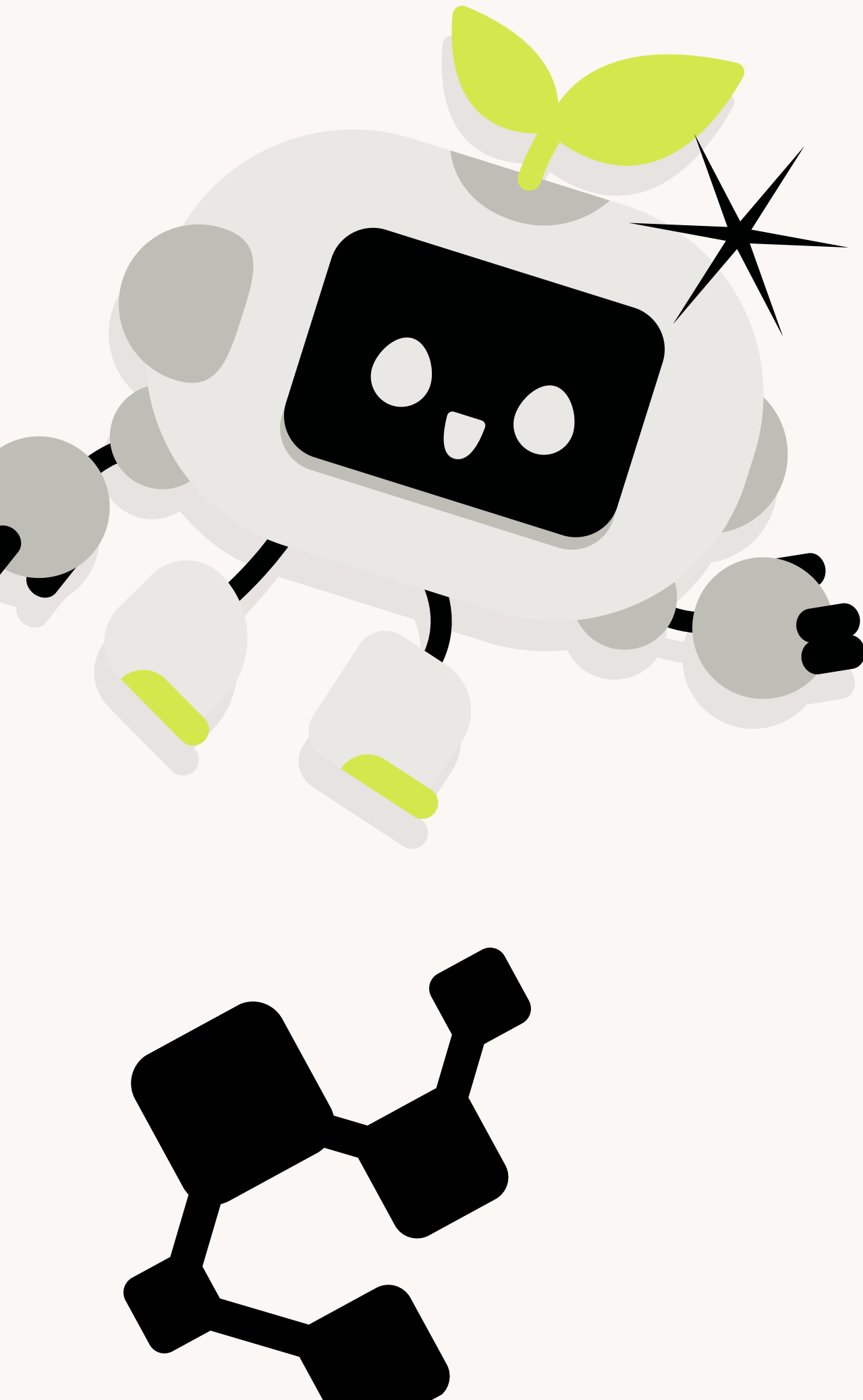
- Engineering Village AI is an advanced tool that applies artificial intelligence to help you efficiently explore academic research content and receive targeted research summaries and insights.

COMPENDEX ON ENGINEERING VILLAGE AI (II)



WHAT IS COMPENDEX ON ENGINEERING VILLAGE AI ?

- Powered by reliable Compendex curated data, Engineering Village AI strives to simplify the research process, support knowledge discovery, and provide updates on the latest advancements in your areas of study.

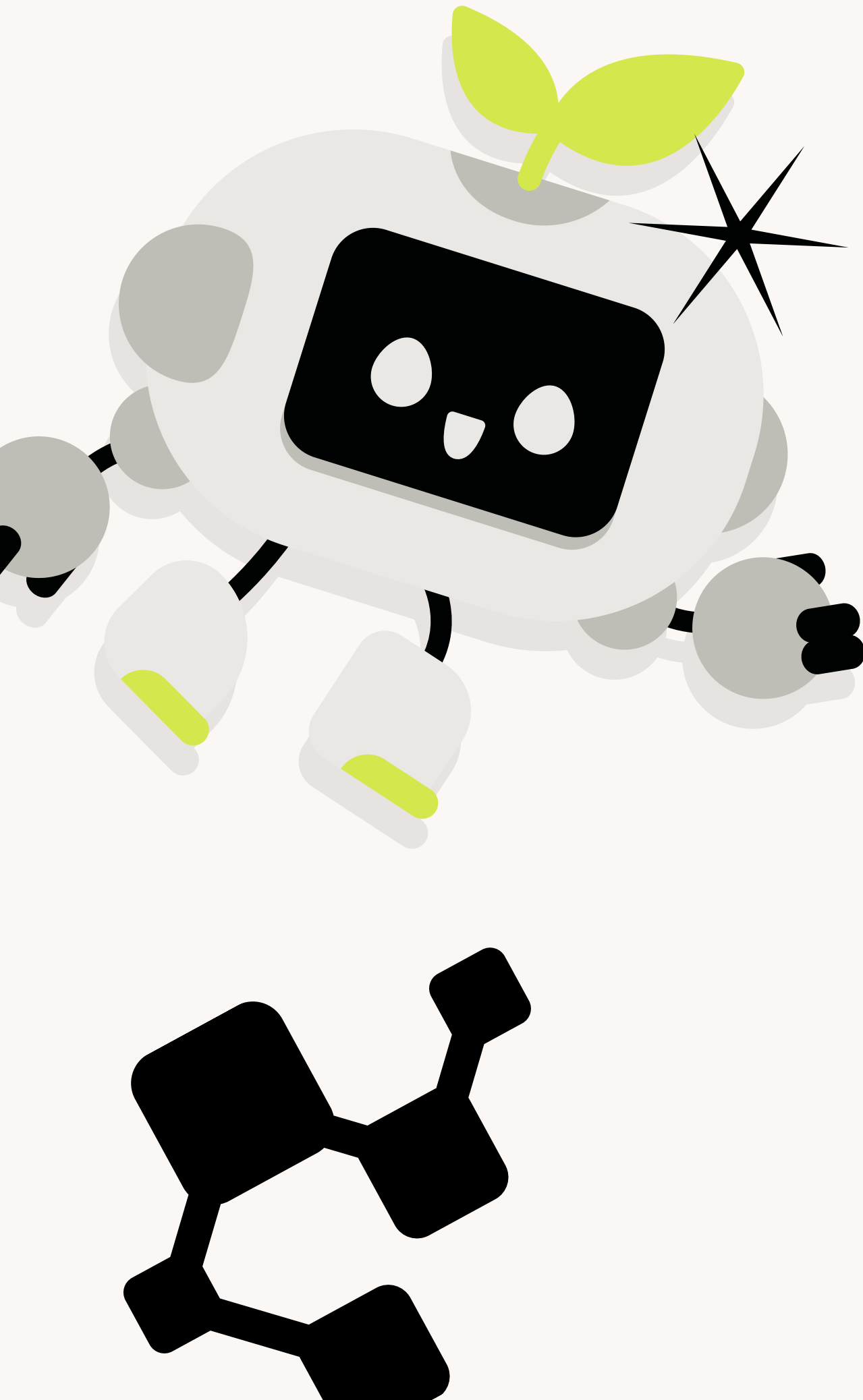


COMPENDEX ON ENGINEERING VILLAGE AI (III)



HOW THE SUMMARIES ARE GENERATED ?

- Engineering Village AI uses semantic search technology to help computers understand the intent and context behind a user's query. Using this technology, Engineering Village AI analyzes these queries to locate relevant documents in the search index.

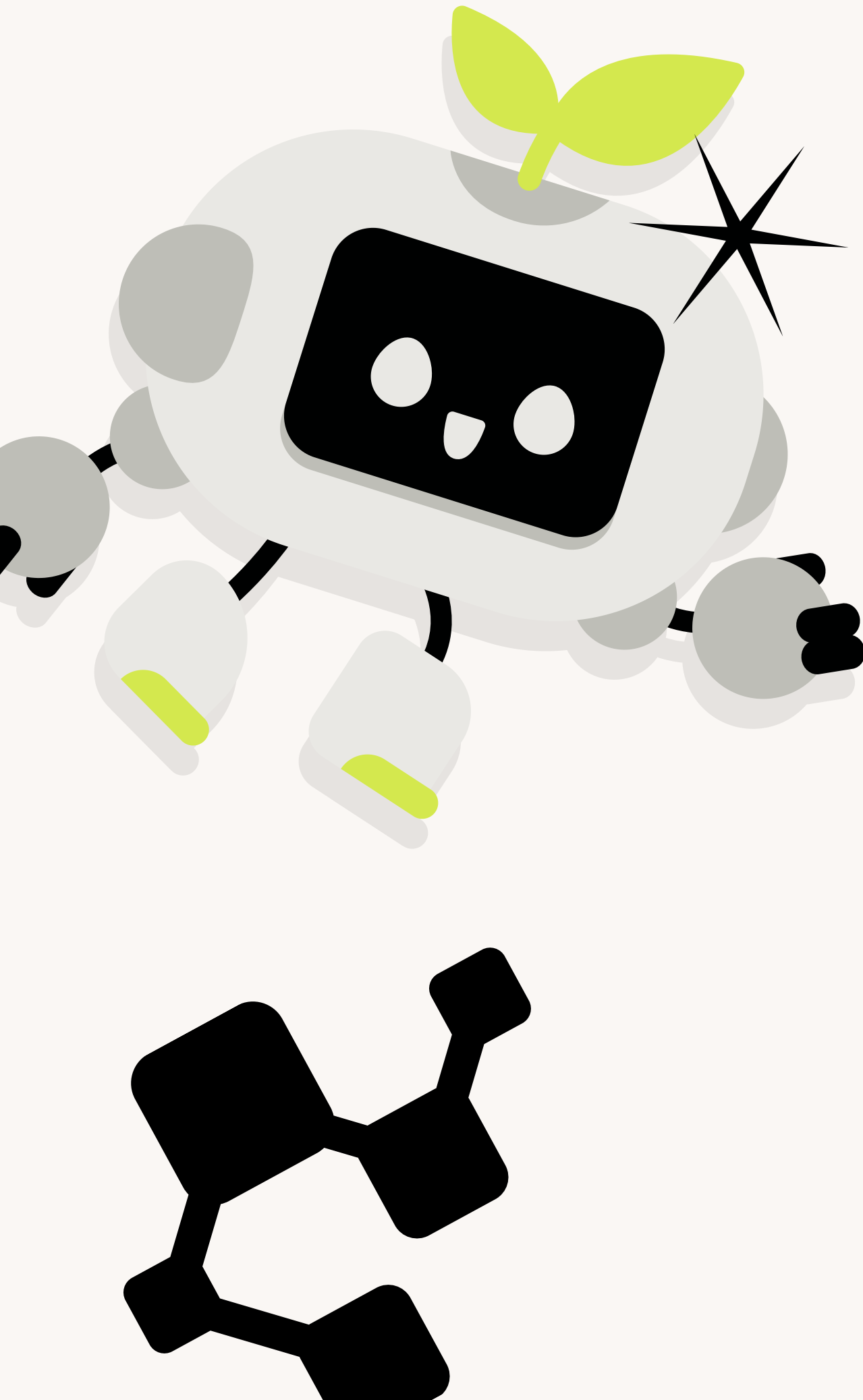


COMPENDEX ON ENGINEERING VILLAGE AI (IV)




HOW THE SUMMARIES ARE GENERATED ?

- To maintain transparency, Engineering Village AI follows specific guidelines to ensure that the summaries are based upon accurate and pertinent Compendex content and include references.



COMPENDEX ON ENGINEERING VILLAGE



Engineering Village

Engineering Village AI Search Search History Alerts More ?

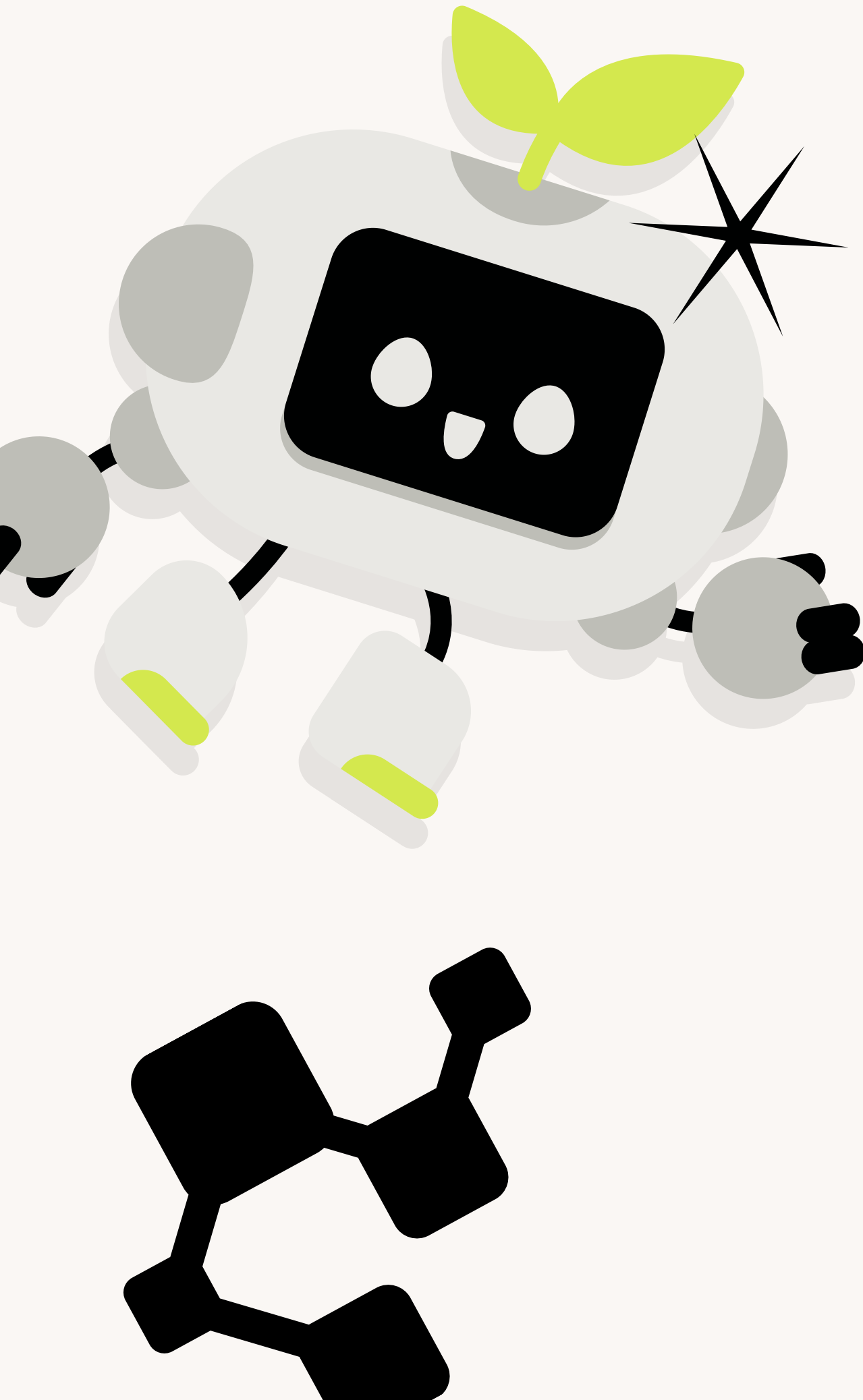
Explore new topics
with Engineering Village AI

What would you like to learn more about? 🔍

Search examples

- ↳ How can aviation become more sustainable and energy-efficient?
- ↳ Analyze the role of additive manufacturing in reducing waste in production processes.
- ↳ What are the latest advancements in transfer learning for natural language processing?
- ↳ What is the impact of nanomaterials on enhancing the mechanical properties of advanced composites?

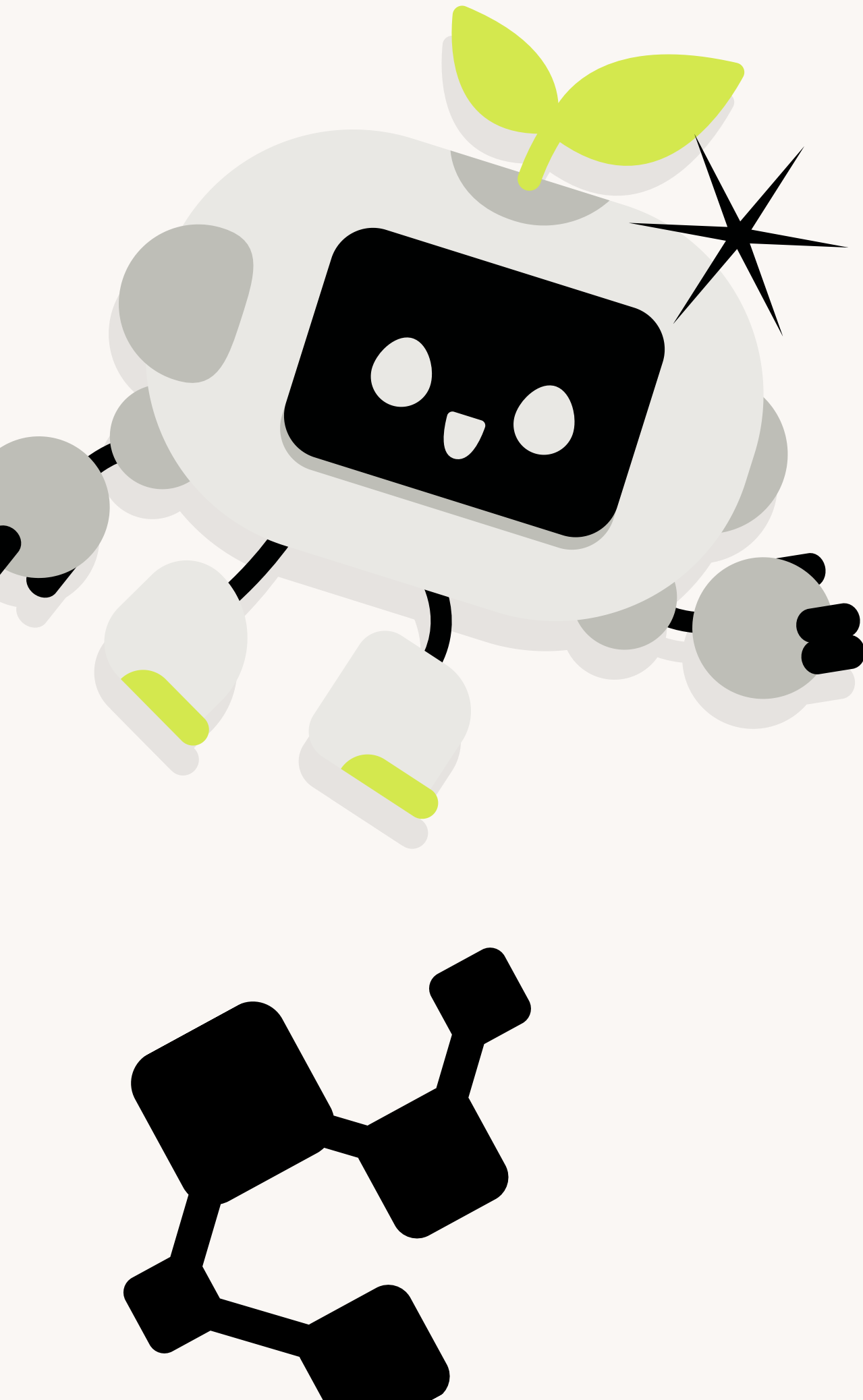
PROQUEST ONE BUSINESS



ONE BUSINESS INCLUDES :

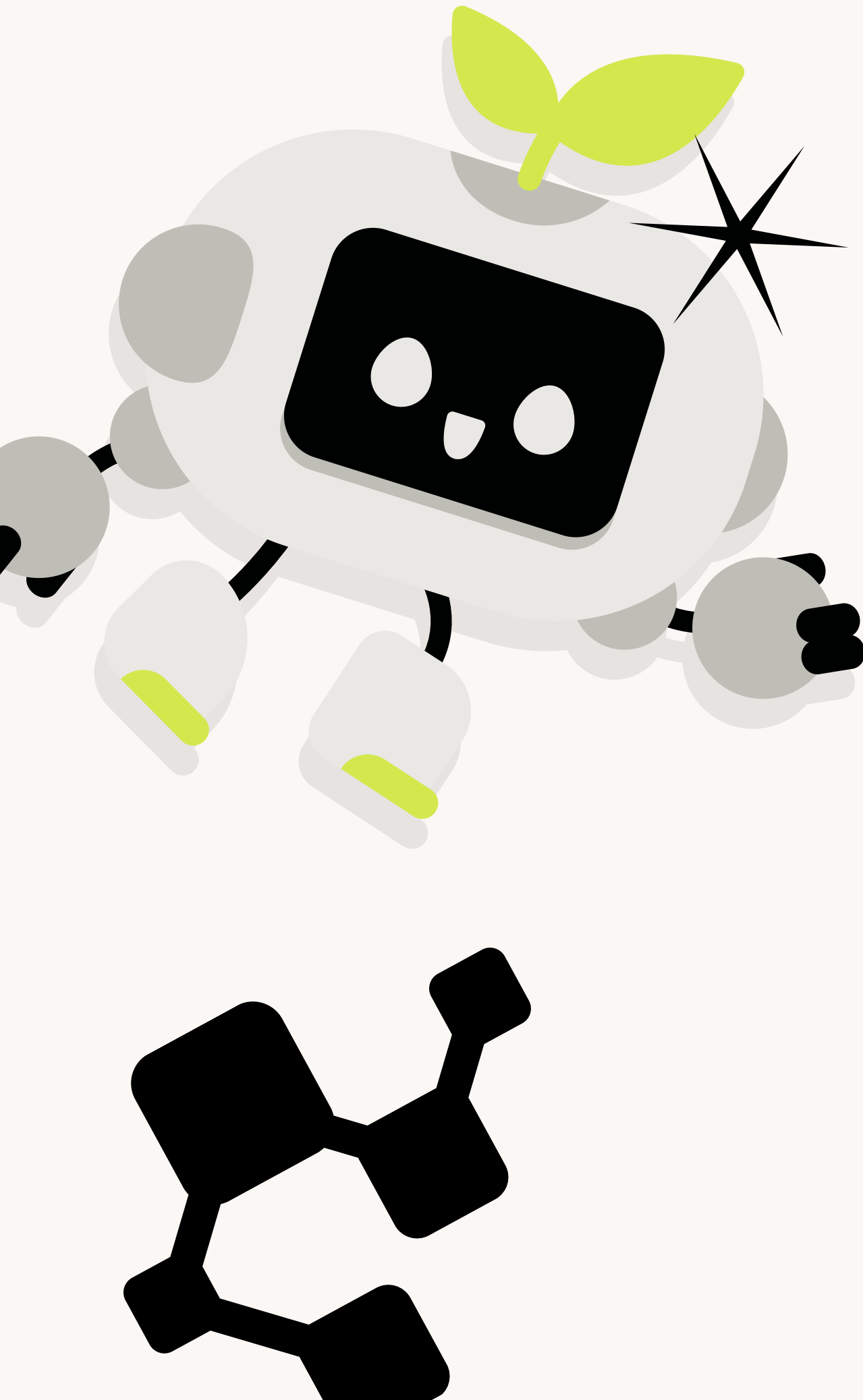
- 2,800k Scholarly Journals
- 2,500 Magazines and Trade Journals
- 25k Case Studies and Business Cases
- 21k Videos
- Over 200k Analyst Reports
- Thousands of Market, Country & Industry Reports
- 55k Dissertations

PROQUEST (I) ONE BUSINESS AI RESEARCH ASSISTANT



WHAT IS ONE BUSINESS AI RESEARCH ASSISTANT?

- One Business is built on the well-known authoritative business and management database ABI/INFORM, and is further enhanced with additional teaching and research resources in the field of business and management. It features the built-in ProQuest AI Research Assistant, which further improves research efficiency and accuracy.



PROQUEST (II)

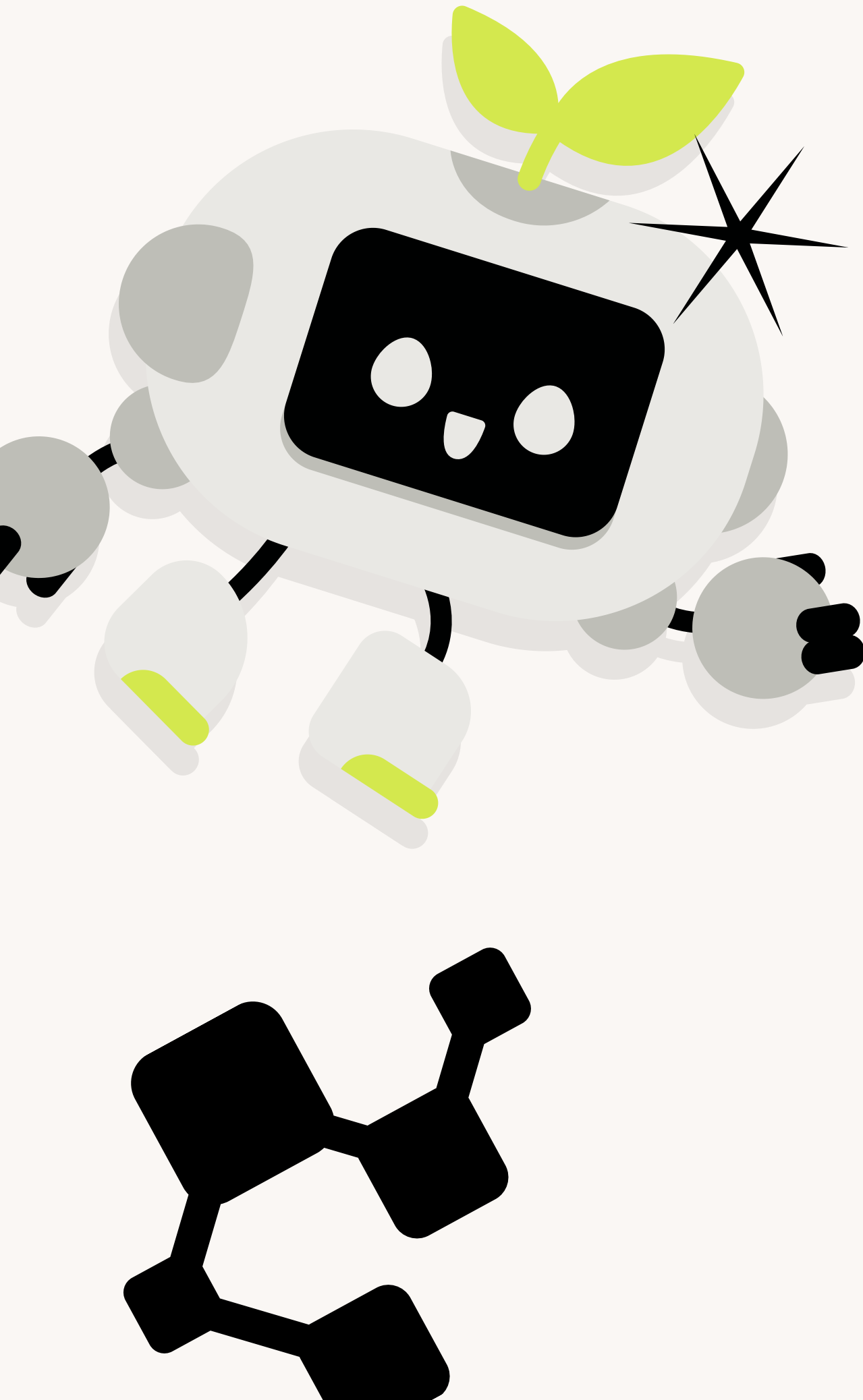
ONE BUSINESS

AI RESEARCH ASSISTANT



ONE BUSINESS AI ASSISTANT CAN :

- Summarizes the core points of an individual article by extracting its key findings and conclusions, enabling quick assessment of relevance.
- Recommends related reference resources to help users gain deeper insights into similar studies and their research context.



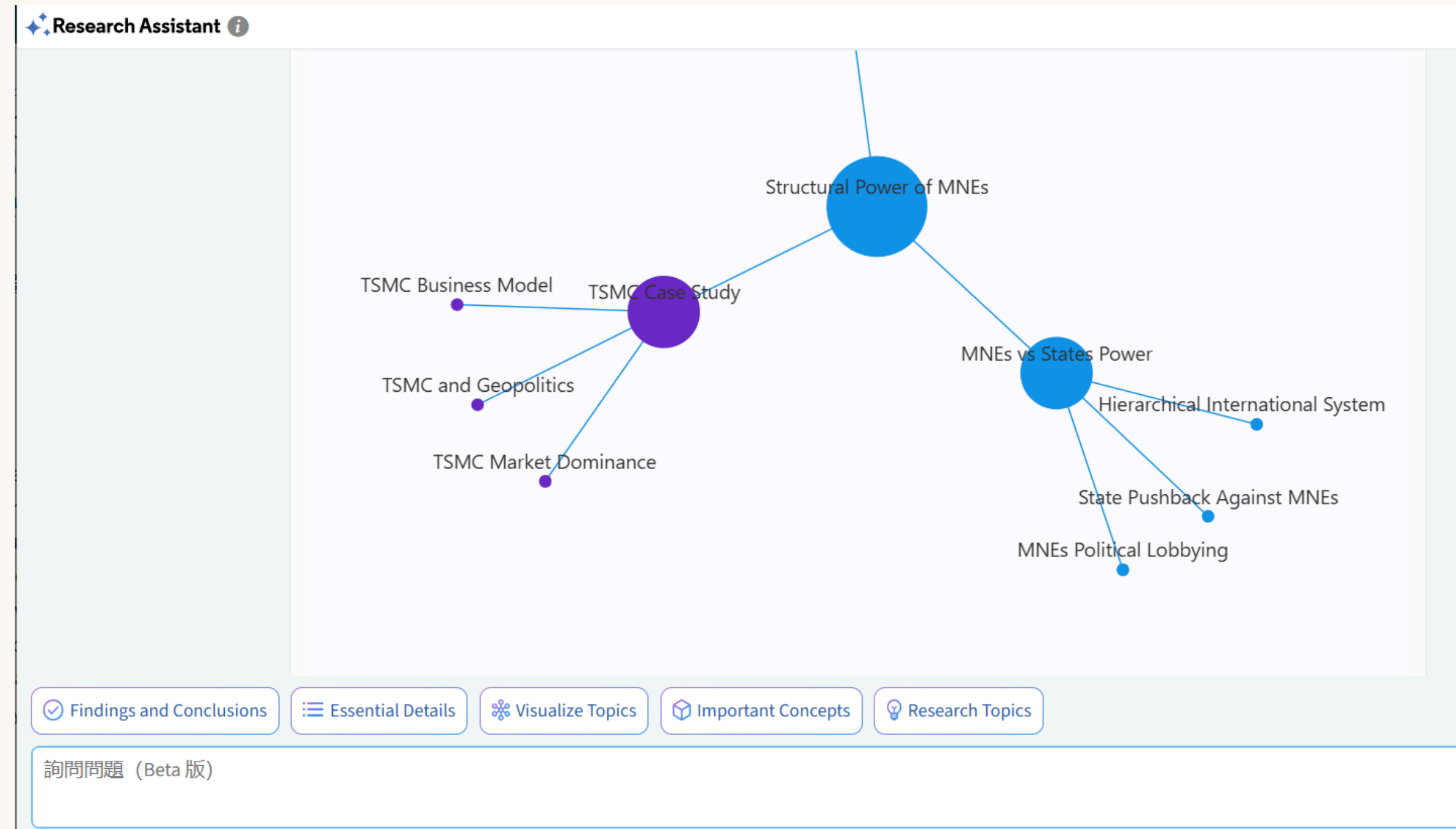
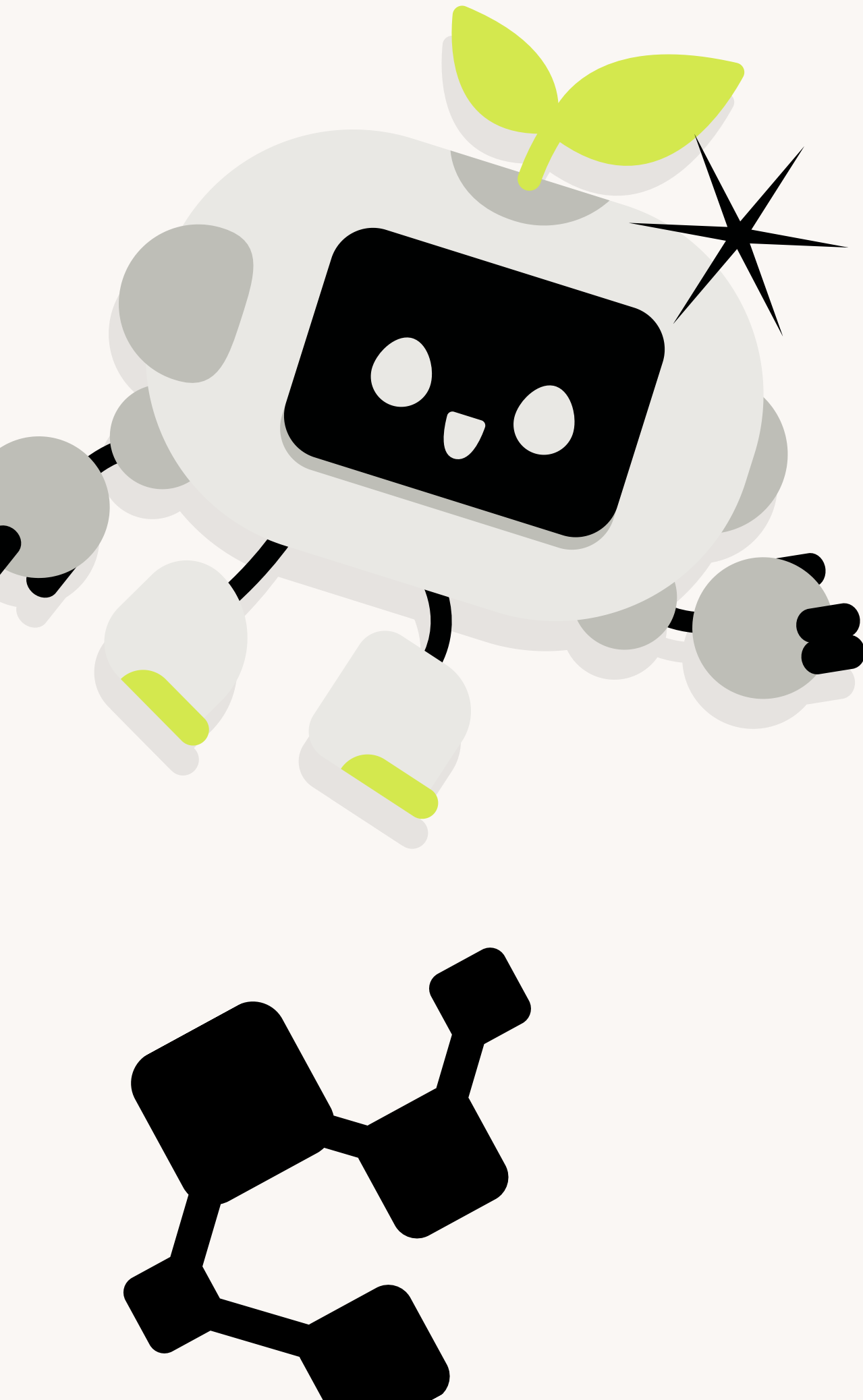
PROQUEST (III) ONE BUSINESS AI RESEARCH ASSISTANT

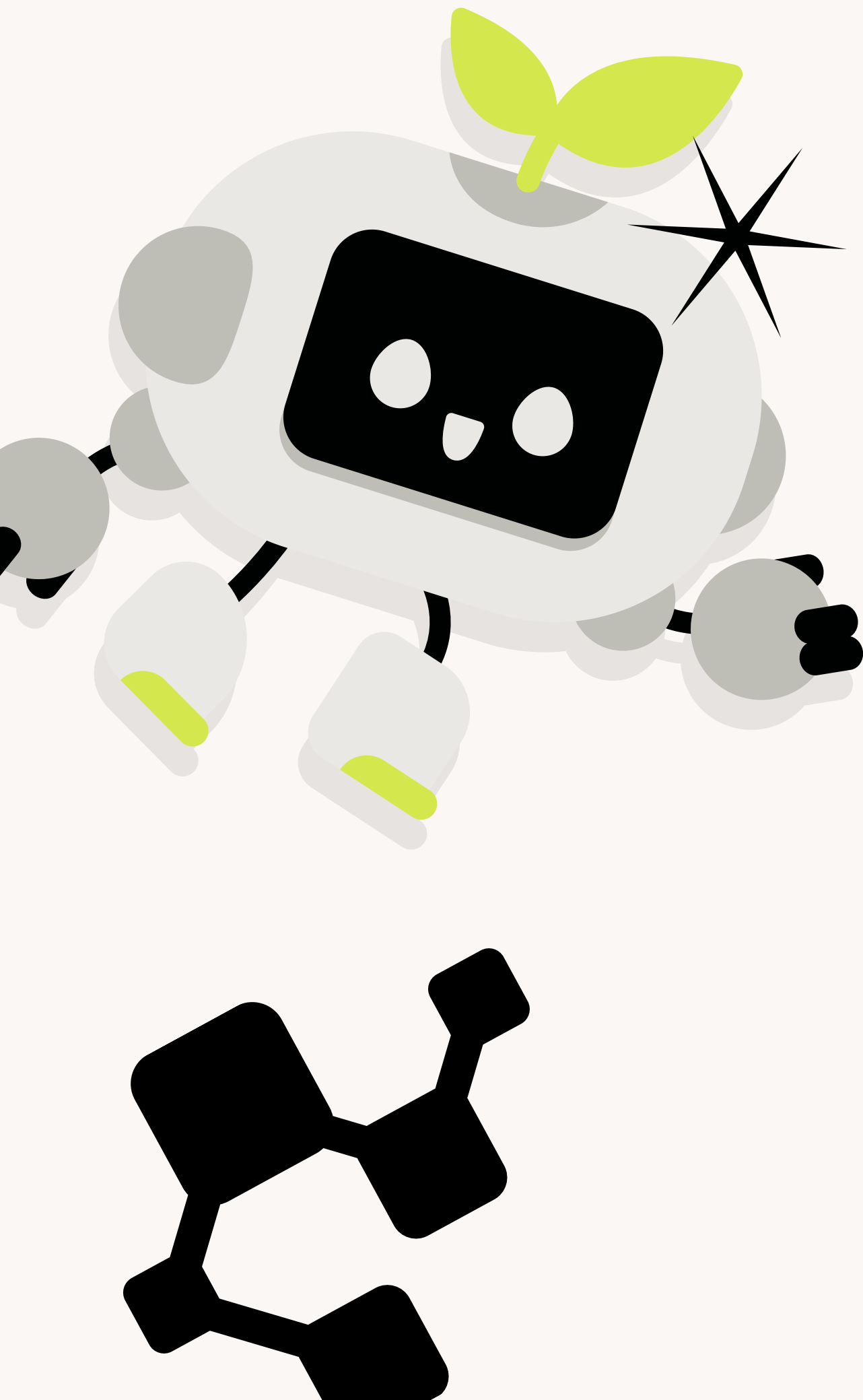


ONE BUSINESS AI ASSISTANT CAN :

- Identifies key research topics and concepts.
- Provides precise keywords to enhance search efficiency.
- Offers visualized mind maps that illustrate the relationships among different topics

PROQUEST (IV) ONE BUSINESS AI RESEARCH ASSISTANT





WRITEFULL AI (I)

英文學術寫作引導工具

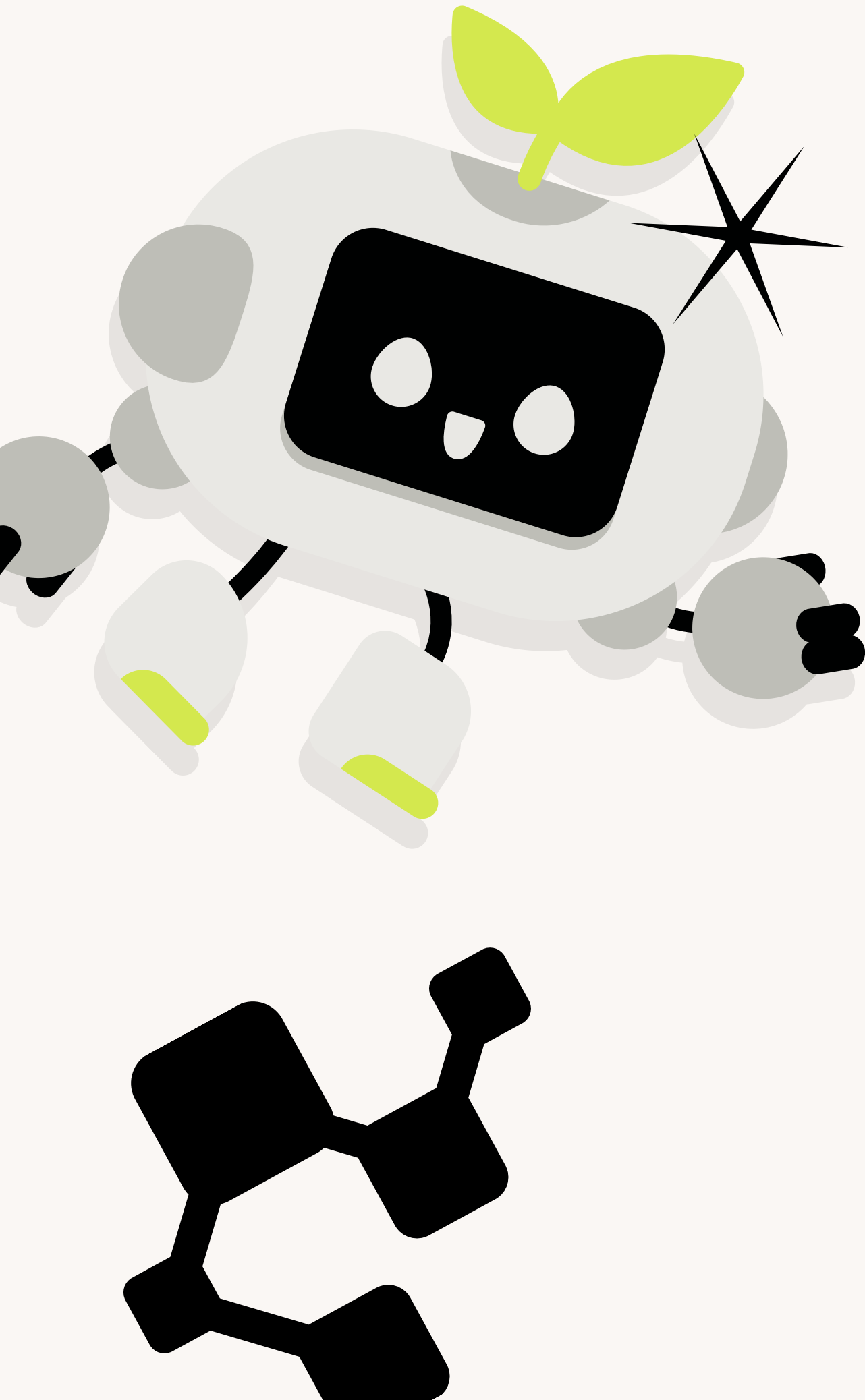


WHAT IS WRITEFULL AI ?

- Writefull has been developed by a team of PhDs in AI and Linguistics. Its language feedback is more comprehensive and accurate than that of other tools and is tailored to research writing. Besides its high-quality edits, Writefull offers an extensive range of writing features, all specialized to help with academic writing.

WRITEFULL AI (II)

英文學術寫作引導工具

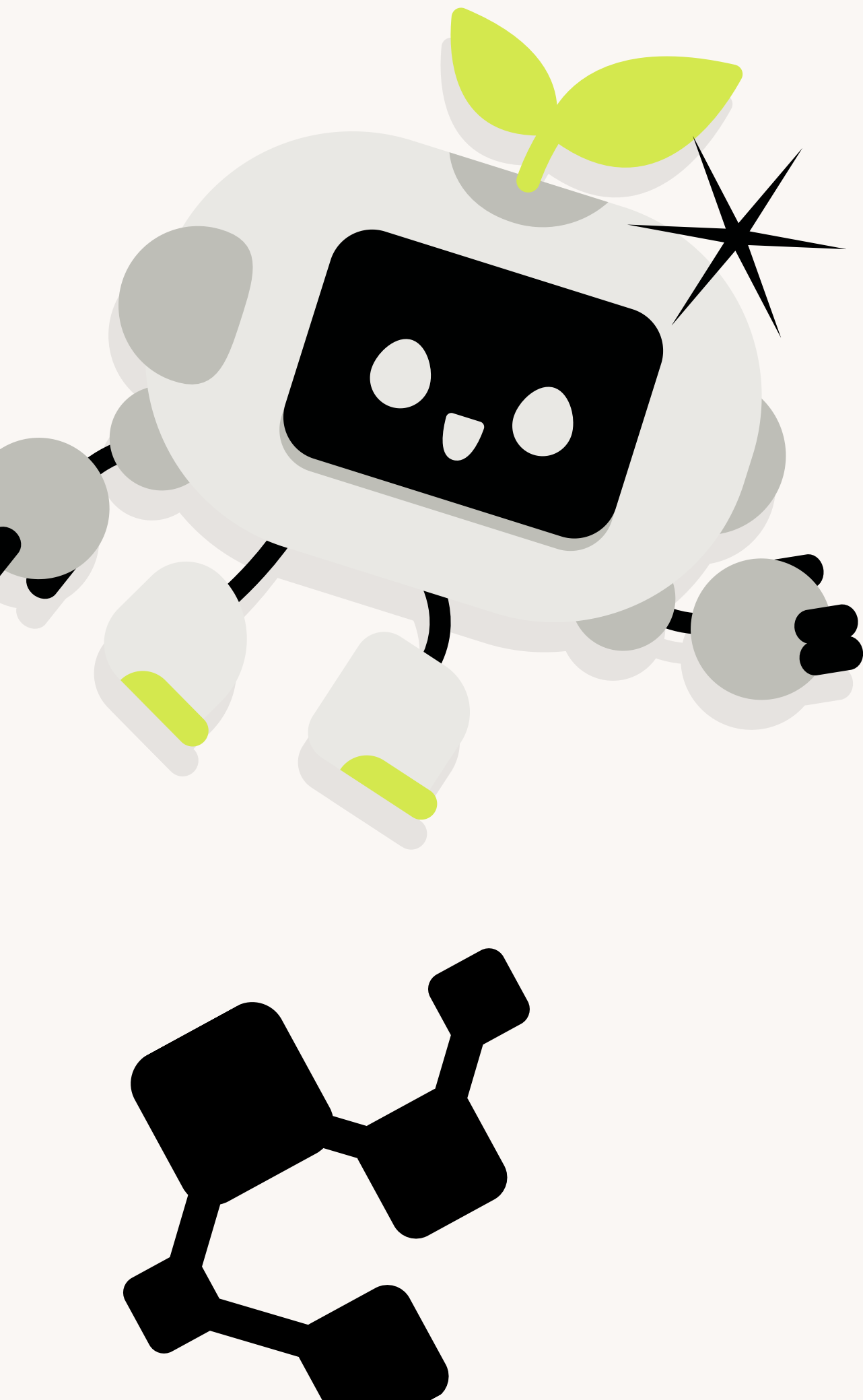


WRITEFULL AI CAN :

- Provides sentence templates, wording comparisons, and academic language suggestions tailored to different sections of a paper, with multiple options offered based on usage frequency.
- Corrects grammatical and punctuation errors.
- Detects and alerts users when citations may be required.

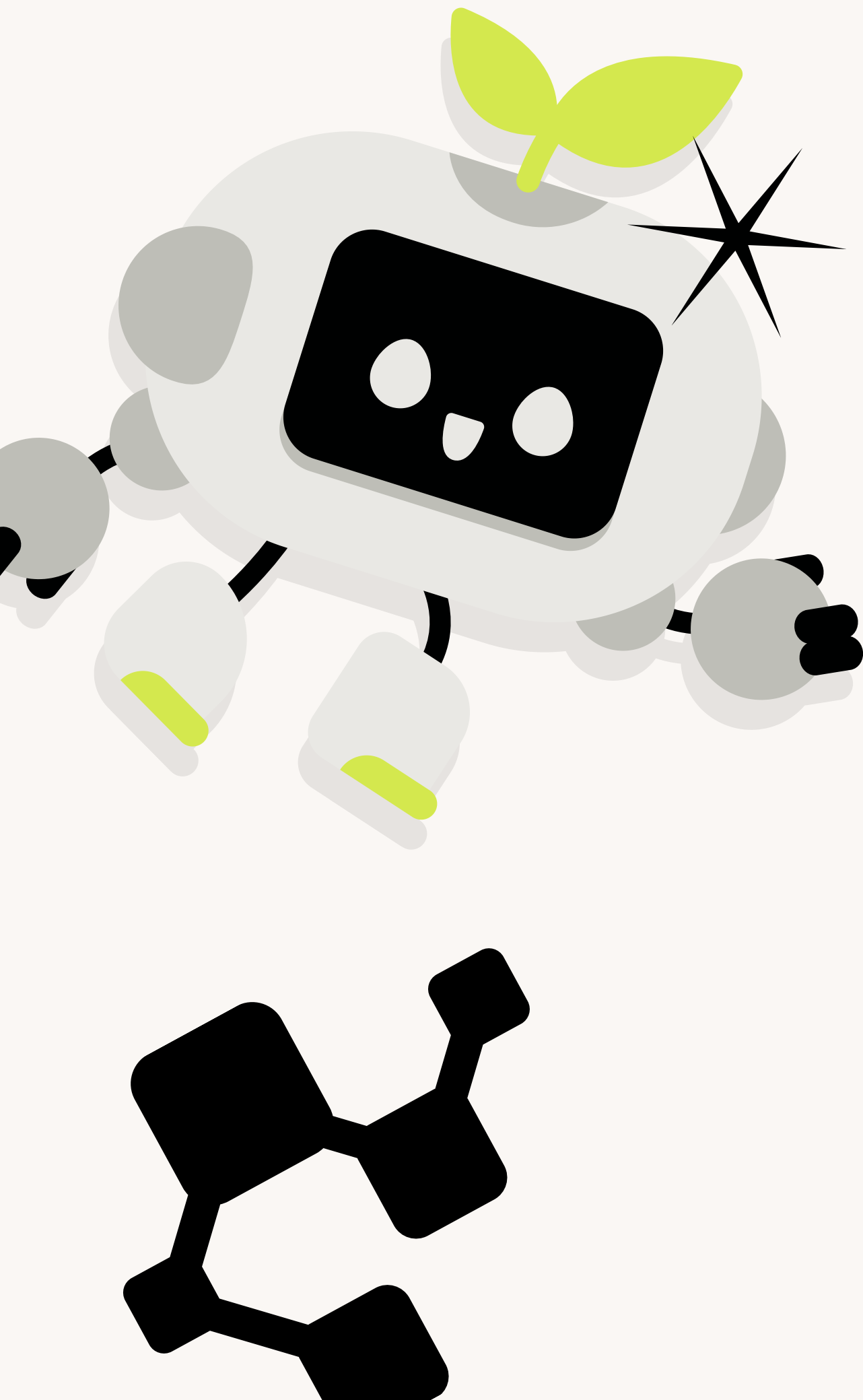
WRITEFULL AI (II)

英文學術寫作引導工具



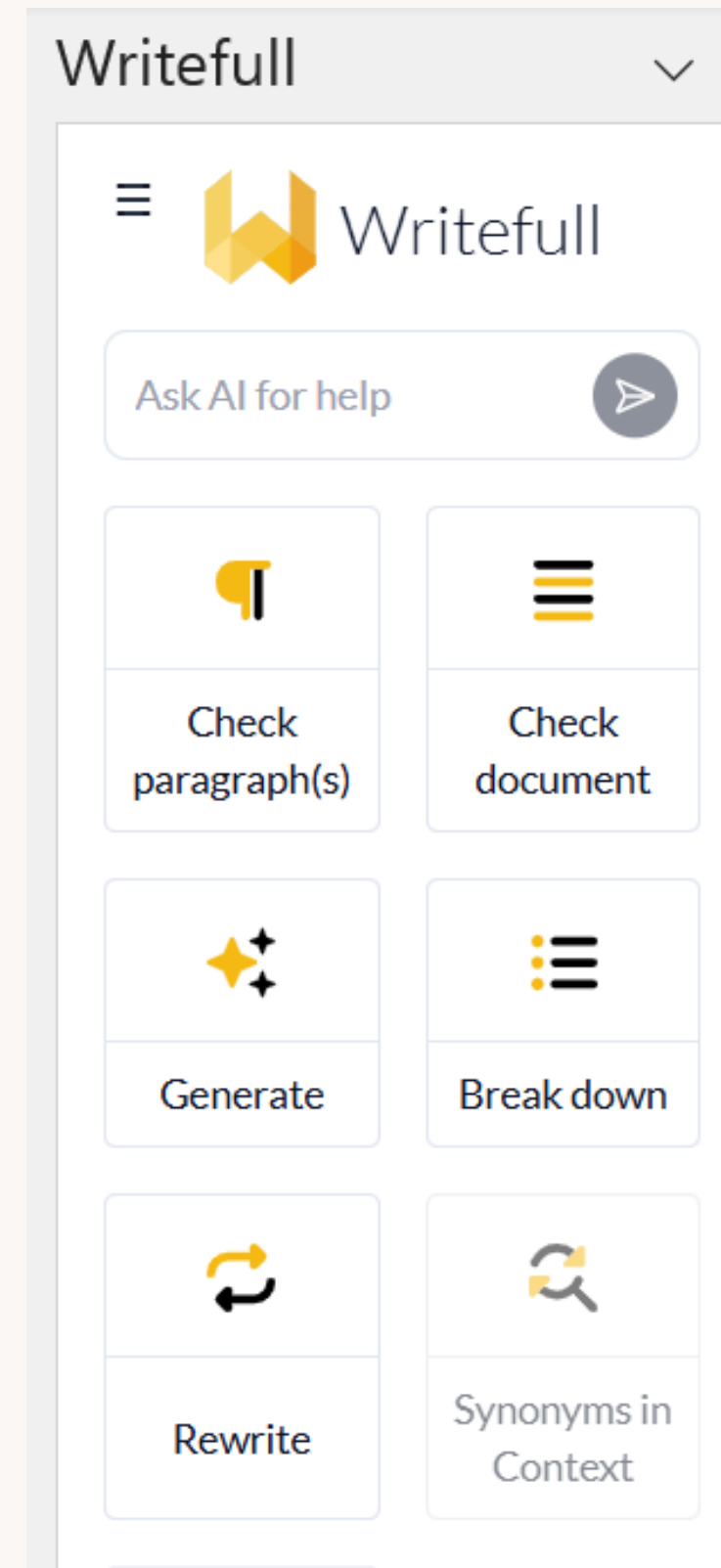
WRITEFULL AI CAN :

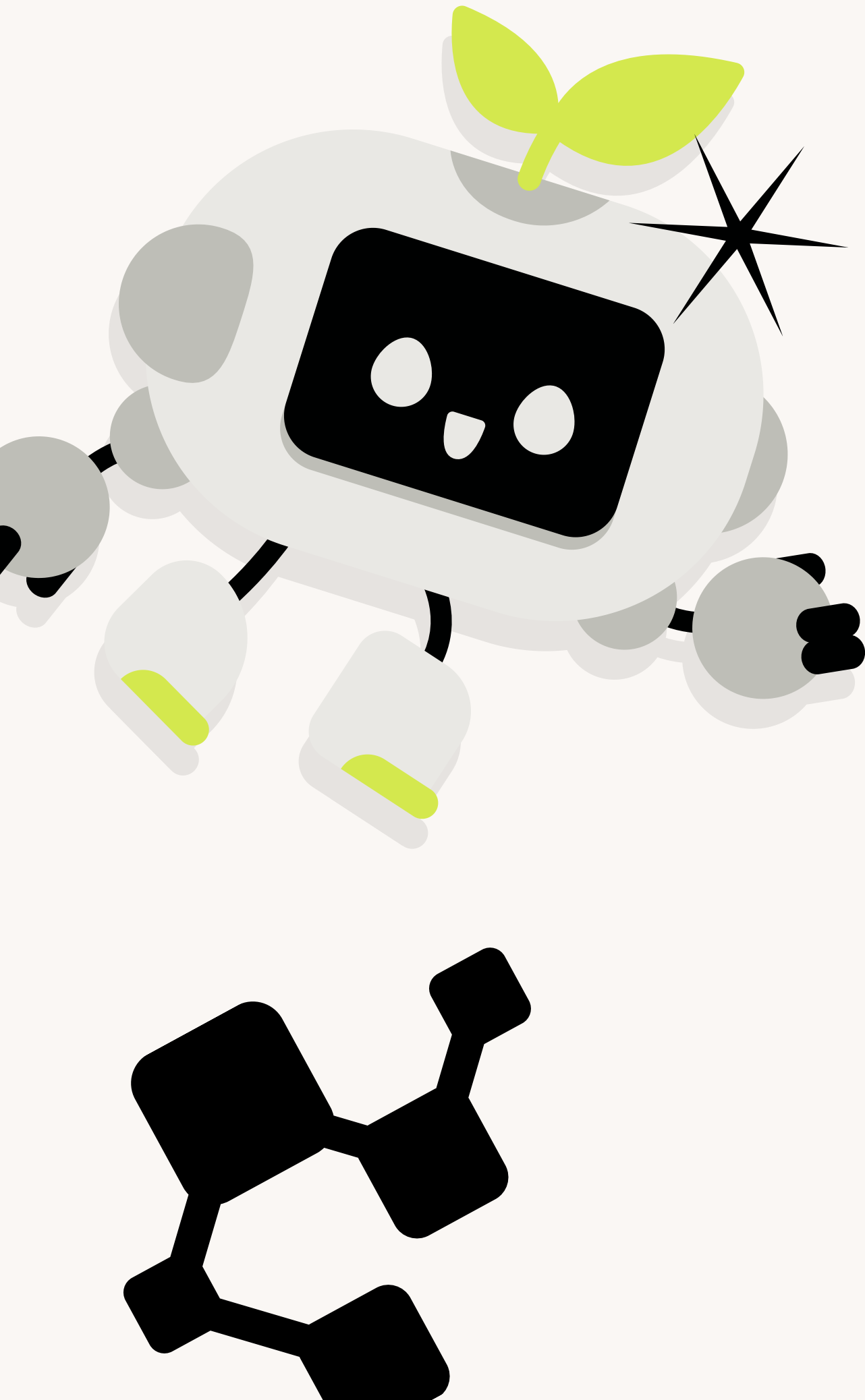
- Allows step-by-step revisions or one-click corrections, with revision tracking and markup.
- Integrates with Microsoft Word to deliver real-time writing suggestions during the writing process.



WRITEFULL AI (III)

英文學術寫作引導工具





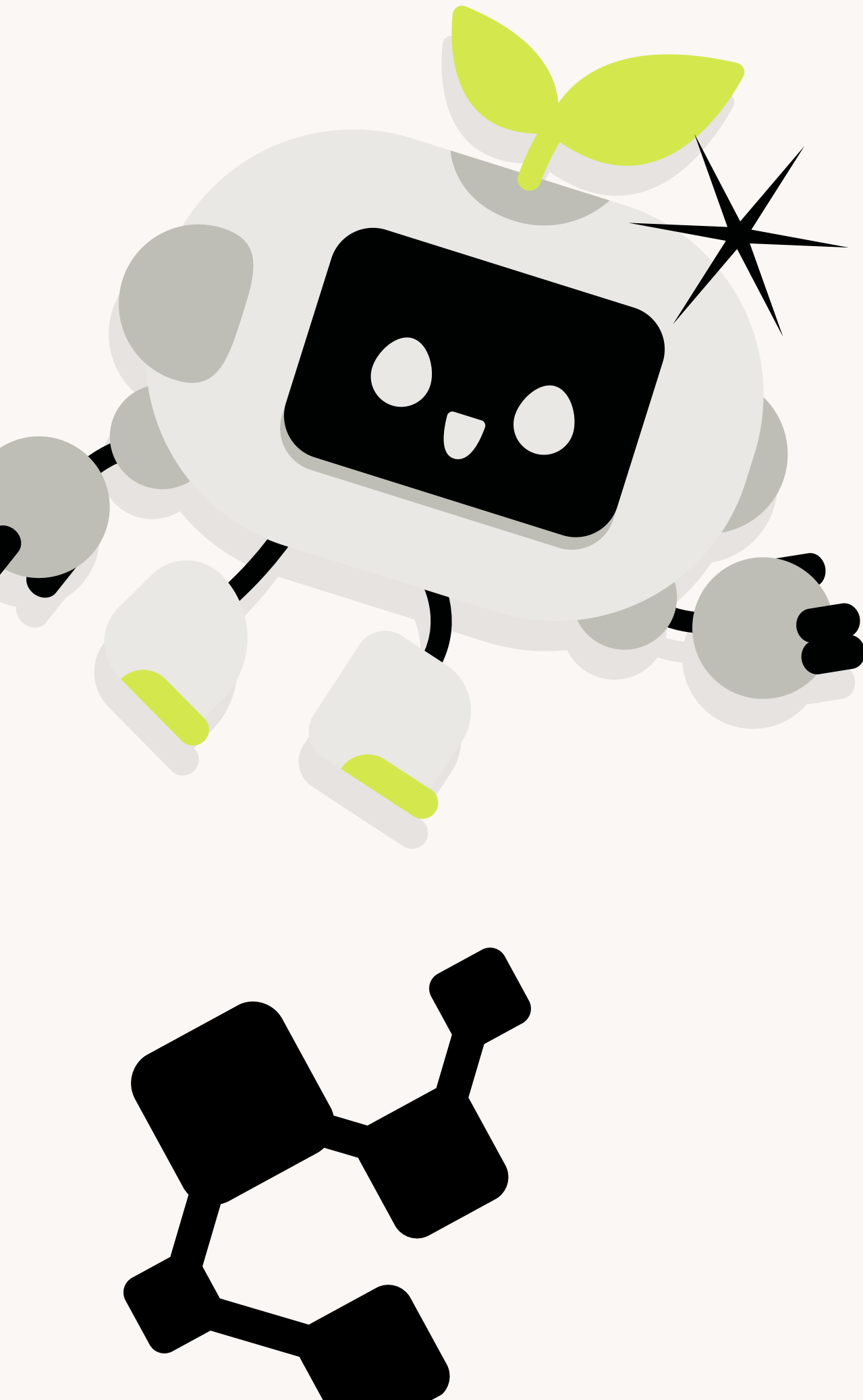
TURNITIN AI (I)



WHAT IS TURNITIN AI ?

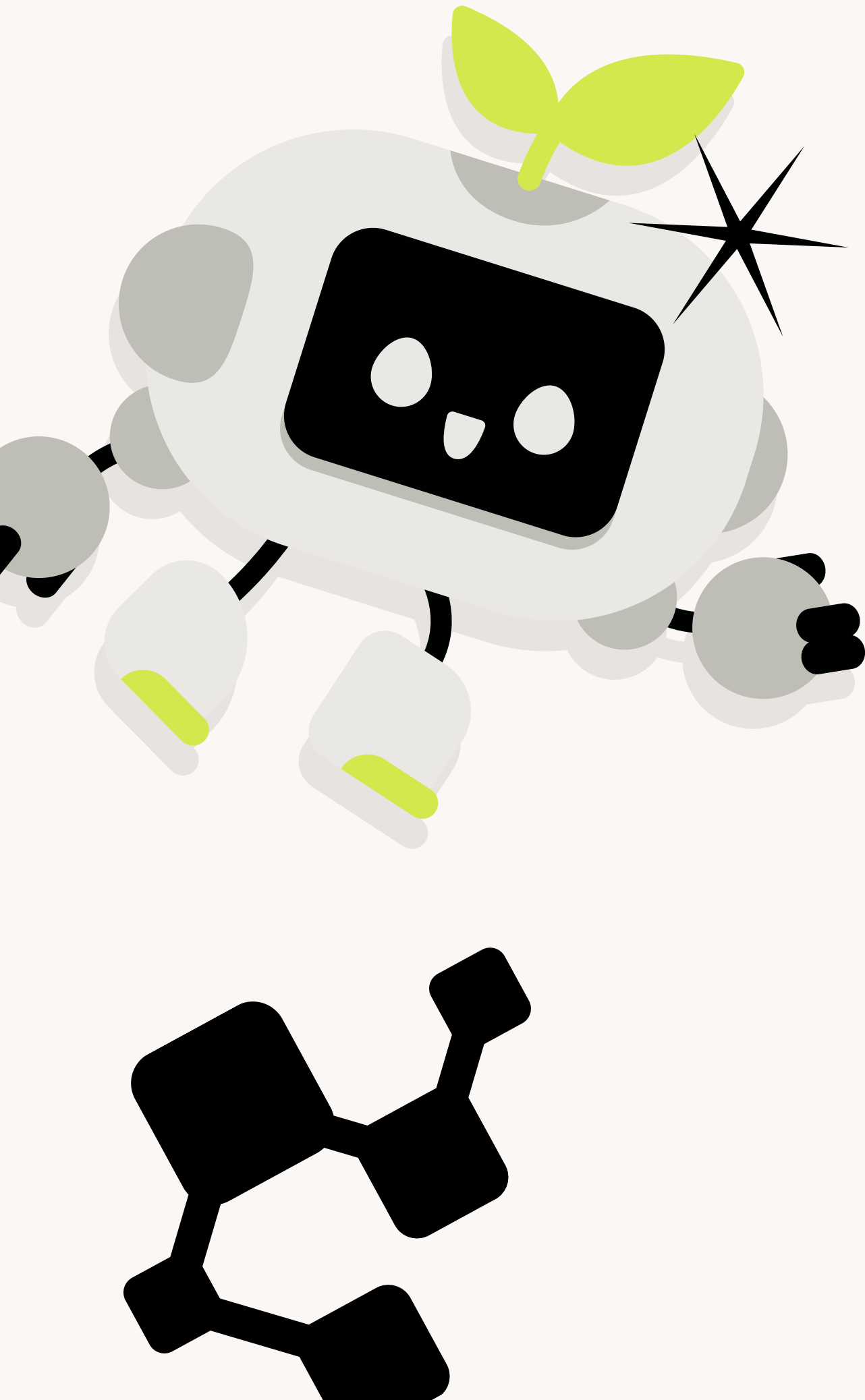
- Helps educators, researchers, and publishers identify text in manuscripts that may have been generated by AI, including content written by generative AI tools such as ChatGPT, or text that has been further rewritten by AI-based writing tools, thereby enabling assessment of a manuscript's originality and authenticity.

TURNITIN AI (II)



HOW TO USE TURNITIN AI ?

- Currently, only users with **Turnitin instructor accounts** can view the AI report within the Originality Report interface.
- To apply for Turnitin AI , instructors must first create a Turnitin account and then complete the [application questionnaire](#).

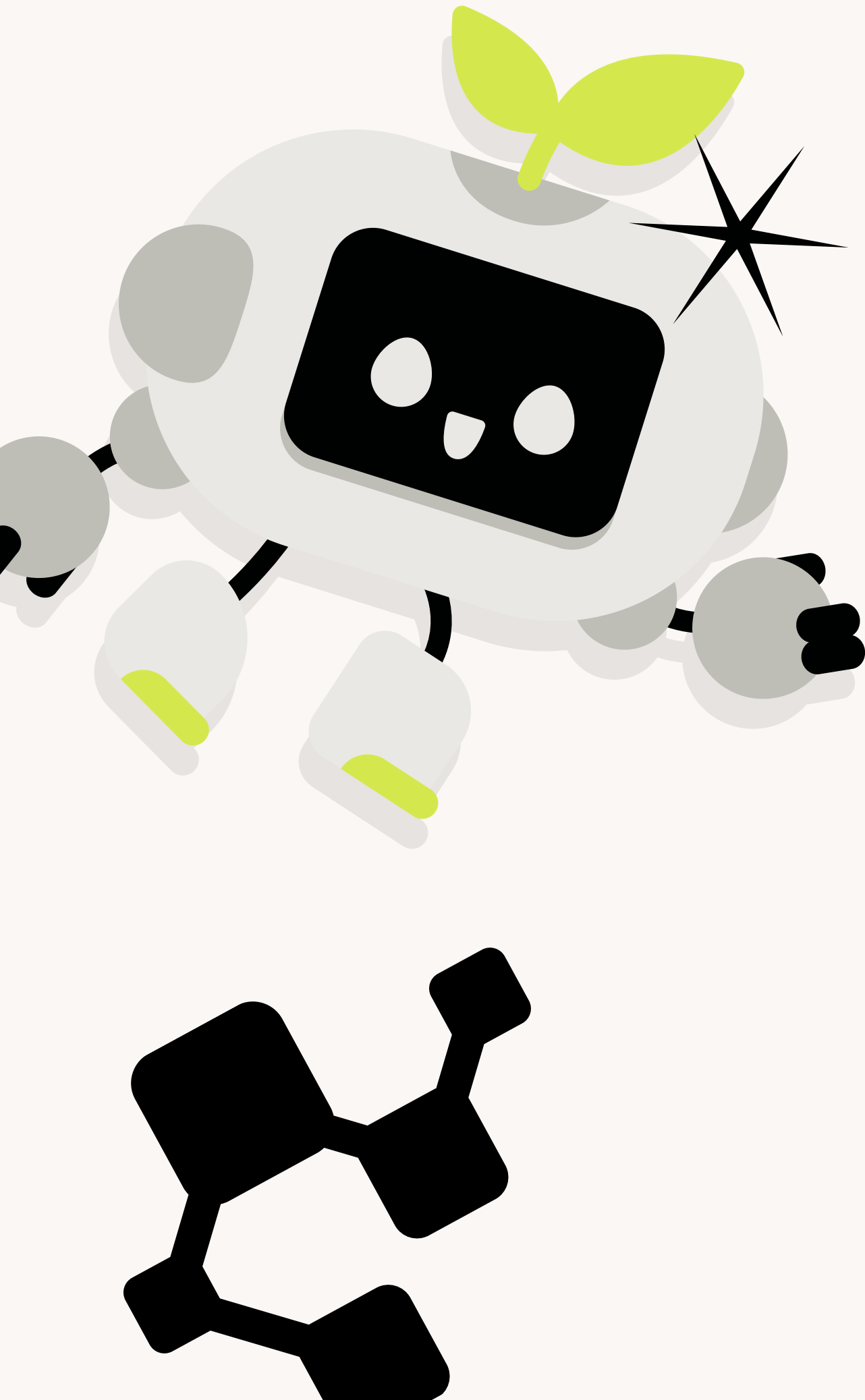


TURNITIN AI (III)



HOW TO USE TURNITIN AI ?

- The currently supported languages for AI detection are English, Spanish, and Japanese, with additional languages under development.
- An AI report can be generated only for submissions containing between 300 and 30,000 words.

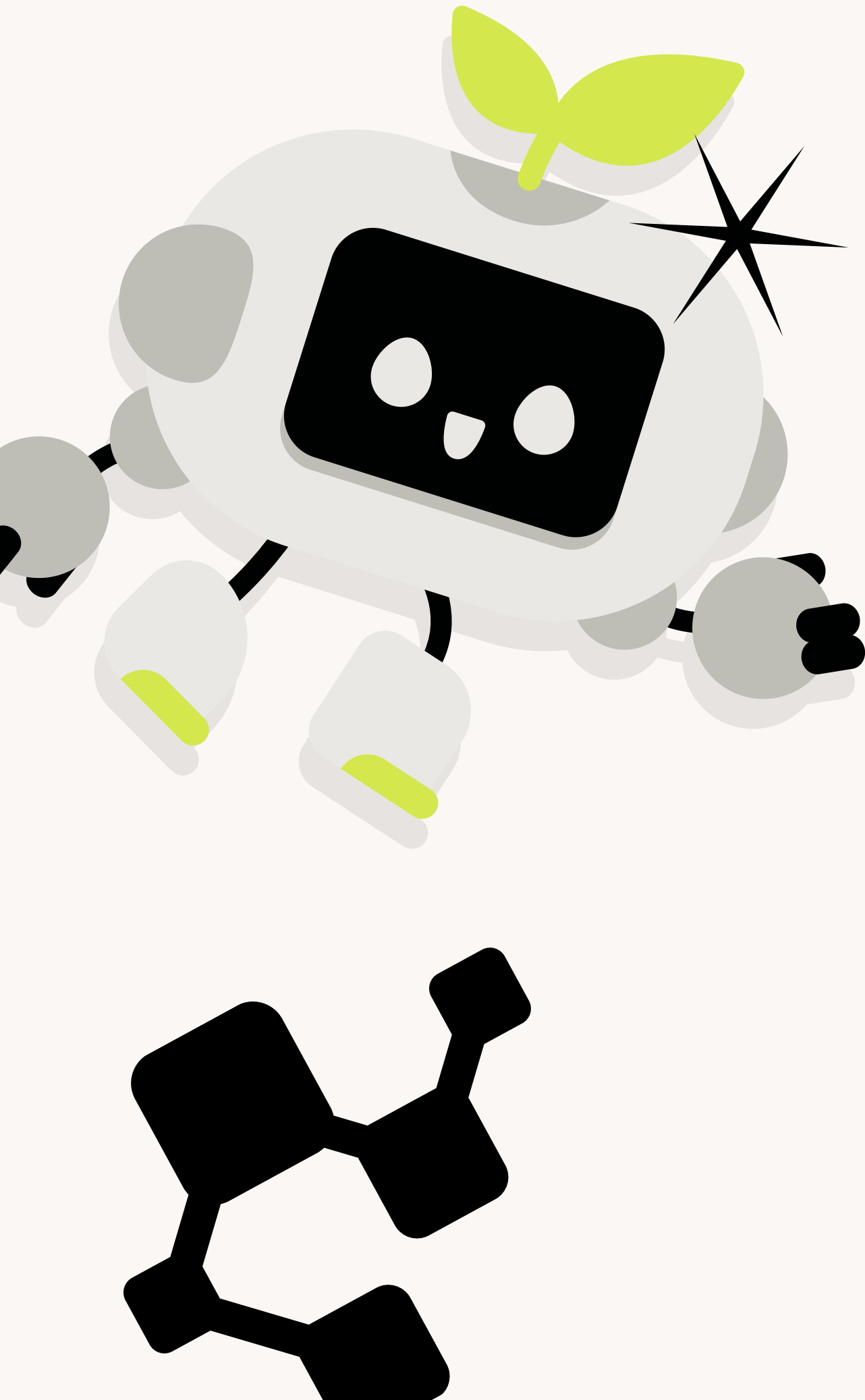


TURNITIN AI (IV)



HOW THE REPORT ARE GENERATED ?

- The system analyzes the manuscript by evaluating prose sentences that meet system requirements and are written in standard grammatical form, in order to determine what proportion of the text is likely to have been generated by AI, or generated by AI and subsequently revised or polished using additional AI tools.



TURNITIN AI (V)

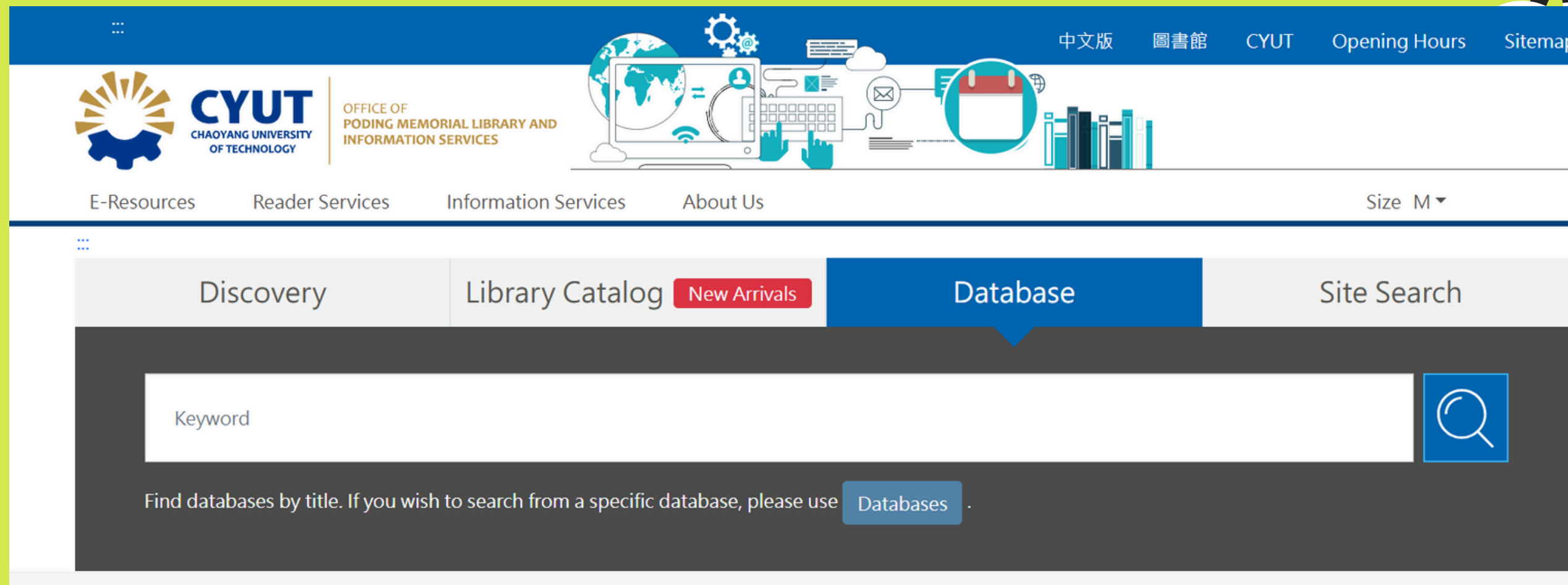


HOW THE REPORT ARE GENERATED ?

- At present, the system can detect content produced by models including GPT-3, GPT-3.5, and their variants. Turnitin will continue to expand its detection capabilities to include additional models in the future.

How to access the resource?

- Search Database Name
- Log in with the Faculty / Student information system account and password.



The screenshot displays the CYUT (Chaoyang University of Technology) library website. The header includes the university logo, name, and the 'OFFICE OF PODING MEMORIAL LIBRARY AND INFORMATION SERVICES'. Navigation links for '中文版', '圖書館', 'CYUT', 'Opening Hours', and 'Sitemap' are present. A secondary menu lists 'E-Resources', 'Reader Services', 'Information Services', and 'About Us'. The main content area features a tabbed interface with 'Discovery', 'Library Catalog', 'New Arrivals', 'Database' (selected), and 'Site Search'. Below the 'Database' tab is a search bar with the placeholder text 'Keyword' and a magnifying glass icon. A note below the search bar states: 'Find databases by title. If you wish to search from a specific database, please use [Databases](#)'.

HOW ?

Contact Us

04-23323000 #3142 or 3144

